

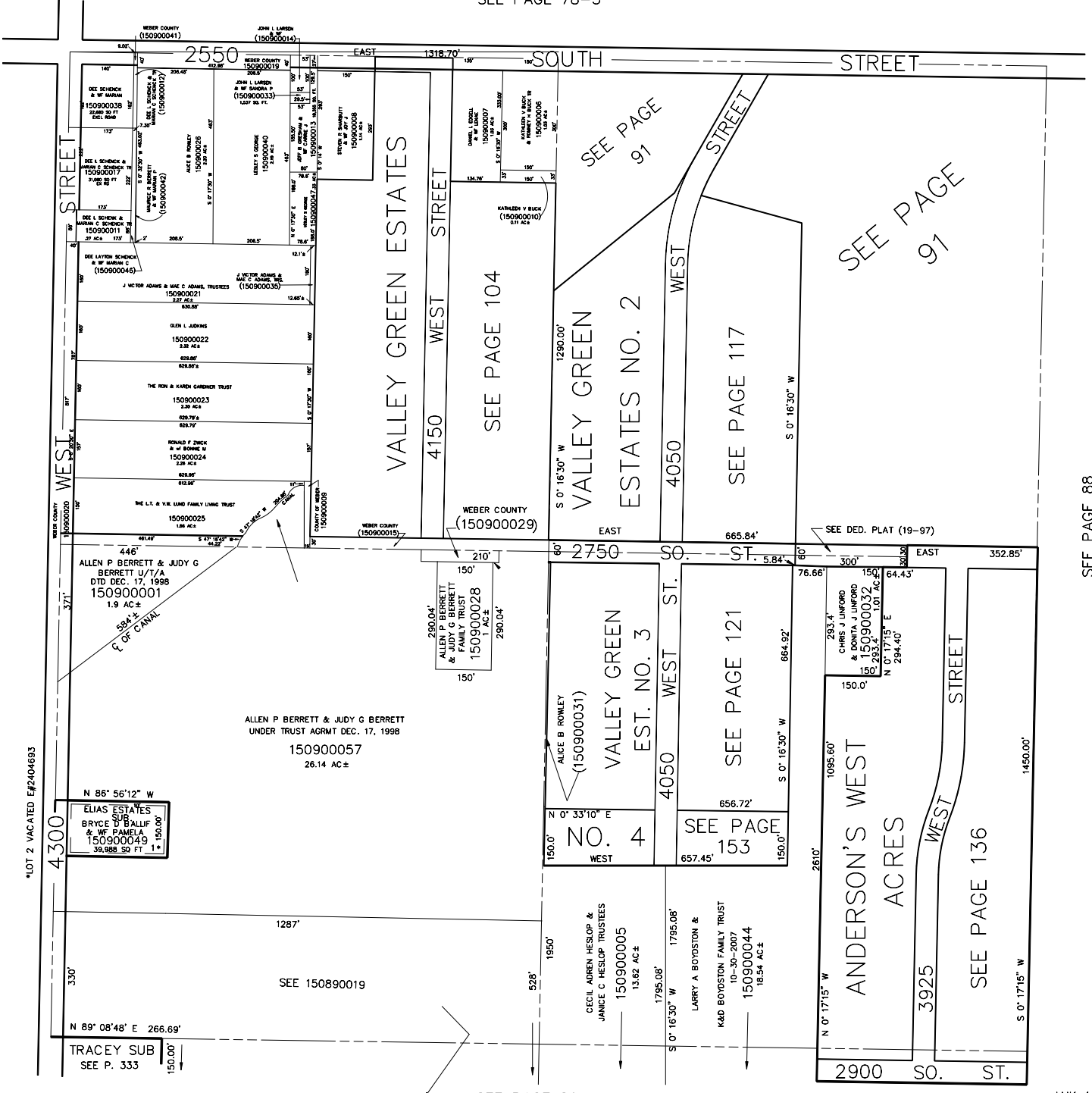
N.W. 1/4
SECTION 33, T.6N., R.2W., S.L.B. & M.

TAXING UNIT: 53

IN WEBER COUNTY

SCALE 1" = 200'

SEE PAGE 78-3



SEE PAGE 83-1

LOT 2 VACATED E#2404683

SEE PAGE 88

SEE PAGE 89